

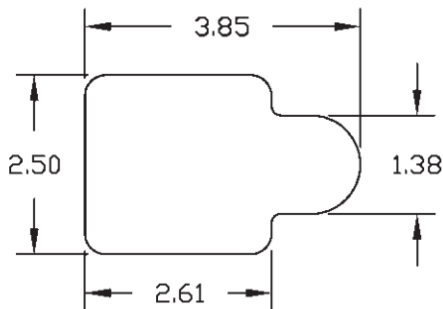
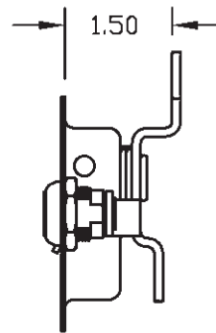
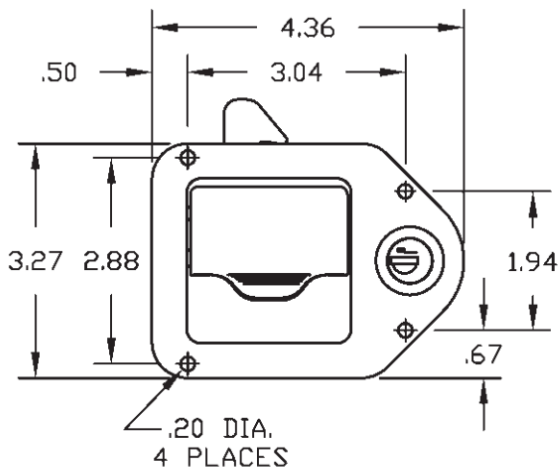
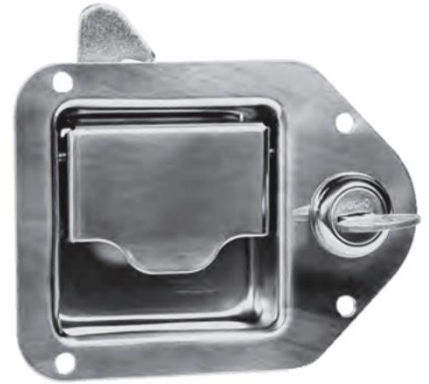
471 / 472 Paddle Hook Latch

Features

- Paddle latch with single hook design
- Designed to be used with truck toolboxes or storage containers
- Also available in non-locking
- Standard features are four mounting holes, stainless steel paddle and receptacle
- All other parts are carbon steel, zinc-plated

Material

- Stainless steel paddle and receptacle, all other parts carbon steel, zinc plated



SUGGESTED CUTOUT

Part No.	Type
3-471-SS	Key Locking
3-472-SS	Non Locking

Dimensions in inches